

# Gyproc Plasterboards

Performance boards for drylining systems

# Plasterboards

## What is plasterboard?

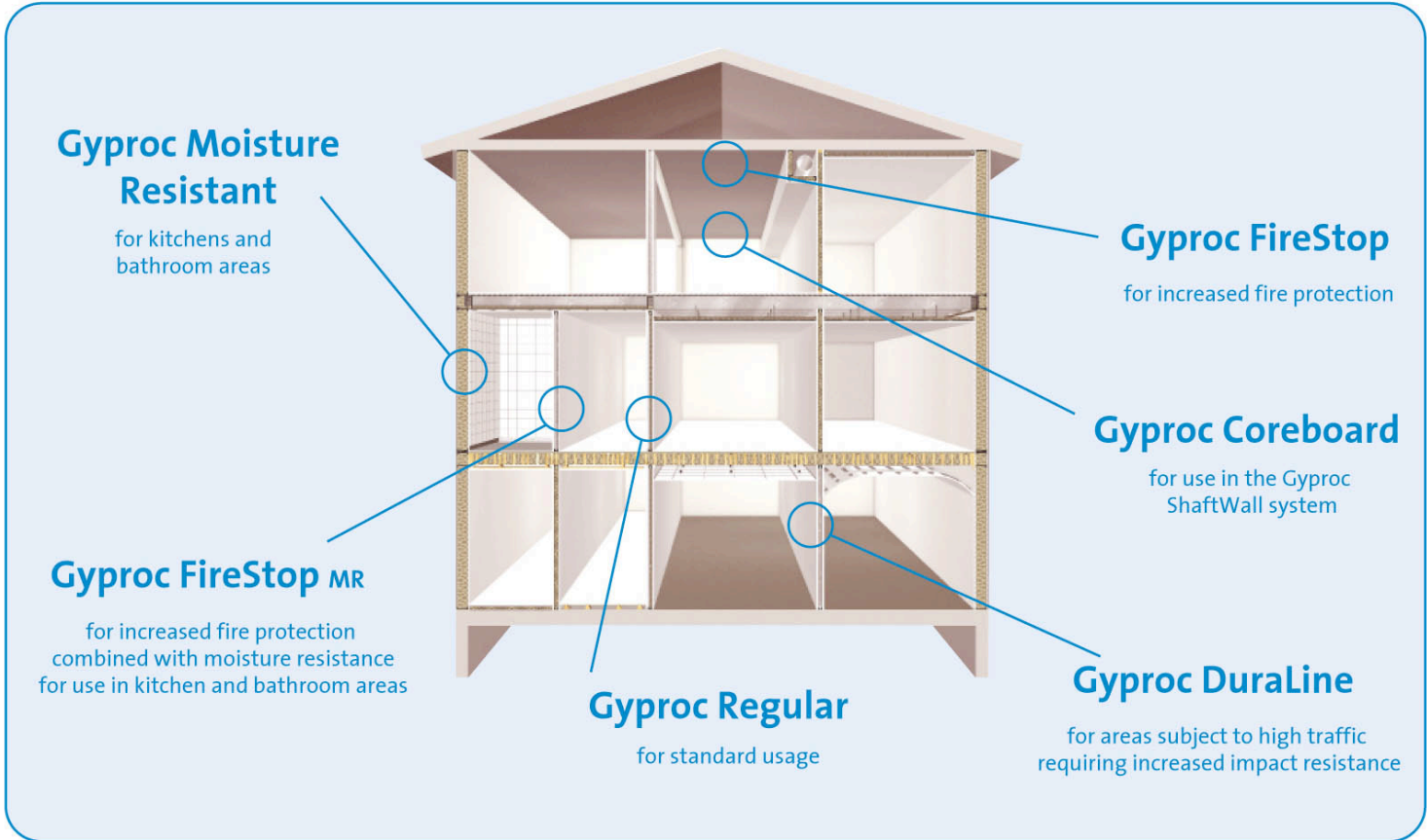
Plasterboards enable practical space division to be achieved through lightweight partition systems with speed and relative ease. As demands on a building's performance have developed so too have plasterboards. Gyproc provides a range of plasterboard products that now protect in the areas of fire, sound, thermal, moisture and impact resistance. The range of Gyproc products provide durable, high quality linings for walls and ceilings, lift shafts, stairwells, corridors and auditoria.



Sustainability is a priority for Gyproc which is why all plasterboards are encased in paper that is 100% recycled. That's 5,000 tonnes of paper a year.



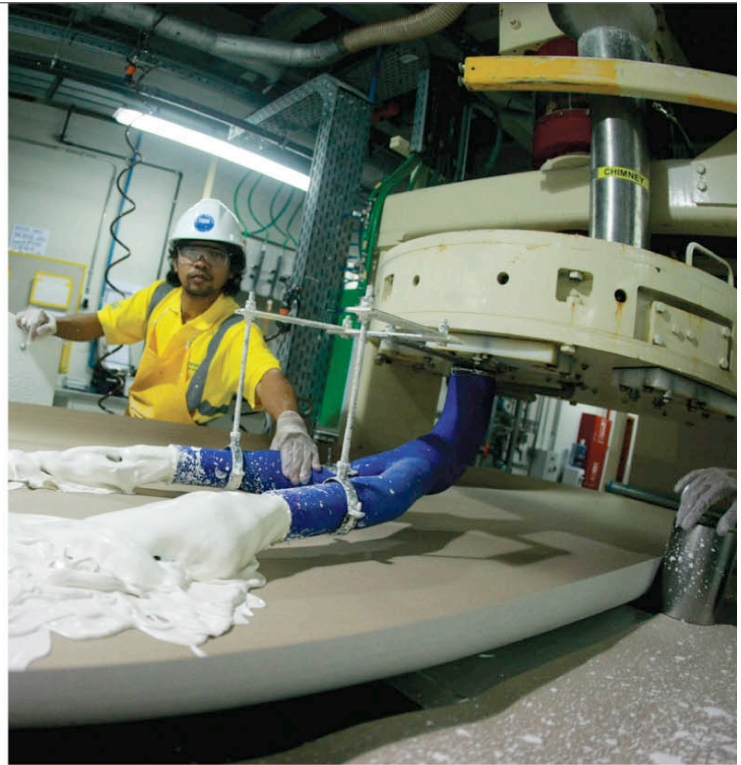
## Where are they used?



# Plasterboards

## Gyproc Plasterboard Product Range

From the factory in Abu Dhabi, Gyproc manufacture a wide range of plasterboard products allowing them to serve the needs of their customers throughout the Middle East region. The state-of-the-art facility offers greater flexibility offering customers a variety of value added options such as bespoke lengths and thicknesses in both tapered and square edge profiles.



### Gyproc Regular



#### Product Characteristics

Gyproc Regular plasterboard consists of an aerated gypsum core encased in, and firmly bonded to, strong paperliners. Gyproc Regular is a plasterboard that is suitable for drylining internal surfaces.

#### Applications

Suitable for most system applications where normal fire, structural and acoustic levels are specified. Can be finished using Gyproc Fibre Tape or Gyproc Paper Tape and Gyproc Jointing Compound. Suitable for direct decoration.

#### Board Colour

- Ivory face paper
- Brown reverse side paper

#### Manufacturing Standards

British Standard BS1230 – Type 1  
European Standard EN520 – Type A  
American Standard ASTM C1396 – Section 5

#### Product Matrix

Width (mm)	Length (mm)*	Edge Type
<b>9mm</b>		
1200	2400	T/E
1220	2440	T/E
<b>12.5mm</b>		
1200	2000	T/E
1200	2400	T/E
1200	2500	T/E
1200	2600	T/E
1200	2700	T/E
1200	2800	T/E
1200	3000	T/E
1220	2440	T/E
1220	3000	T/E
<b>15mm</b>		
1200	2400	T/E
1200	3000	T/E

\* other lengths available on request

### Gyproc Moisture Resistant



#### Product Characteristics

Gyproc Moisture Resistant consists of an aerated gypsum core with water repellent additives encased in, and firmly bonded to, strong Moisture Resistant paperliners that are green in colour. Gyproc Moisture Resistant is a plasterboard that is suitable for drylining internal surfaces.

#### Applications

Suitable as a base for tiling wet use areas, such as bathrooms and kitchens. Also used for external soffits in sheltered positions. Can be finished using Gyproc Fibre Tape or Gyproc Paper Tape and Gyproc Jointing Compound. Suitable for direct decoration.

#### Board Colour

- Green face paper
- Green reverse side paper

#### Manufacturing Standards

British Standard BS1230 – Type 3 & 4  
European Standard EN520 – Type A & H1  
American Standard ASTM C1396 – Section 7

#### Product Matrix

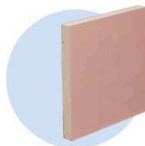
Width (mm)	Length (mm)*	Edge Type
<b>12.5mm</b>		
1200	2000	T/E
1200	2400	T/E
1200	2500	T/E
1200	2700	T/E
1200	2800	T/E
1200	3000	T/E
<b>15mm</b>		
1200	2400	T/E
1200	3000	T/E

\* other lengths available on request

# Plasterboards



## Gyproc FireStop



### Product Characteristics

Gyproc FireStop consists of an aerated gypsum core with glass fibre and other additives encased in, and firmly bonded to, strong paperliners that are pink in colour. Gyproc FireStop is a plasterboard that is suitable for drylining internal surfaces.

### Applications

Used in Gyproc partition, ceiling and shaftwall systems to give increased fire protection. Also used for protection to structural steel. Can be finished using Gyproc Fibre Tape or Gyproc Paper Tape and Gyproc Jointing Compound. Suitable for direct decoration.

### Board Colour

- Pink face paper
- Brown reverse side paper

### Manufacturing Standards

British Standard BS1230 – Type 5  
European Standard EN520 – Type F  
American Standard ASTM C1396 – Type X

### Product Matrix

Width (mm)	Length (mm)*	Edge Type
12.5mm		
1200	2400	T/E
1200	3000	T/E
15mm		
1200	2400	T/E
1200	3000	T/E

\* other lengths available on request

## Gyproc FireStop MR



### Product Characteristics

Gypsum plasterboard with glass fibre and water repellent additives in the core.

Gyproc FireStop MR consists of an aerated gypsum core with glass fibre and water repellent additives encased in, and firmly bonded to, strong moisture resistant paperliners that are pink in colour. Gyproc FireStop MR is a plasterboard that is suitable for drylining internal surfaces.

### Applications

Used in Gyproc partitions where increased fire protection is required combined with moisture performance. Can be finished using Gyproc Fibre Tape or Gyproc Paper Tape and Gyproc Jointing Compound. Suitable for direct decoration.

### Board Colour

- Pink face paper
- Pink reverse side paper

### Manufacturing Standards

British Standard BS1230 – Type 3,4 & 5  
European Standard EN520 – Type F & H1  
American Standard ASTM C1396 – Type X & Section 7

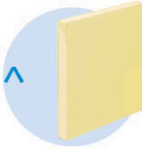
### Product Matrix

Width (mm)	Length (mm)*	Edge Type
12.5mm		
1200	2400	T/E
15mm		
1200	2400	T/E

\* other lengths available on request

# Plasterboards

## Gyproc DuraLine<sup>^</sup>



### Product Characteristics

Gyproc DuraLine consists of an higher density aerated gypsum core with glass fibre and other additives encased in, and firmly bonded to, strong paperliners that are yellow in colour. Gyproc DuraLine is a plasterboard that is suitable for drylining internal surfaces.

### Applications

Designed for use in the Gyproc GypWall ROBUST system to give greater impact resistance in heavy use areas. Can be finished using Gyproc Fibre Tape or Gyproc Paper Tape and Gyproc Jointing Compound. Suitable for direct decoration.

### Board Colour

- Yellow face paper
- Brown reverse side paper

### Manufacturing Standards

British Standard BS1230 – Type 5  
 European Standard EN520 – Type D, F, I & R  
 American Standard ASTM C1396 – Type X & Section 7

### Product Matrix

Width (mm)	Length (mm)*	Edge Type
15mm		
1200	2400	T/E
1200	3000	T/E

<sup>^</sup> also available in MR subject to minimum order quantities

\* other lengths available on request

## Gyproc CoreBoard



### Product Characteristics

A 19mm thick version of Gyproc FireLine MR board Gyproc CoreBoard consists of an aerated gypsum core with glass fibre, water repellent and other additives encased in, and firmly bonded to strong moisture resistant paperliners.

### Applications

Used as the main board in the Gyproc ShaftWall system to provide fire protection with temporary moisture protection during construction. Can be finished using Gyproc Fibre Tape or Gyproc Paper Tape and Gyproc Jointing Compound. Suitable for direct decoration.

### Board Colour

- Green face paper
- Green reverse side paper

### Manufacturing Standards

British Standard BS1230 – Type 3, 4 & 5  
 European Standard EN520 – Type D, F & H1  
 American Standard ASTM C1396 – Type X & Section 7

### Product Matrix

Width (mm)	Length (mm)*	Edge Type
19mm		
598	3000	S/E

\* other lengths available on request



# Plasterboards

## SpecSure® System Performance Future Proofed

Gyproc is a provider of superior quality products, for high performing systems, that are rigorously tested to internationally recognised standards.

Our systems withstand the robust demands of today's construction methods and building uses and provide comfortable living and working environments to the occupant.

We are confident our products will perform as intended. So confident we stamp it with Gyproc assurance. Our SpecSure® system warranty is available on all complete Gyproc systems that consist of our comprehensive range of products.

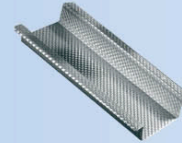
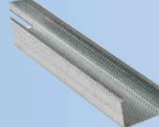
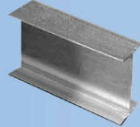
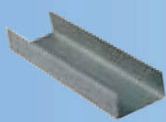
SpecSure® - guaranteeing the future of drywall.



## Everything else you need..

The widest range of metal framing

Gyproframe 'C' Studs Gyproframe 'I' Studs Gyproframe Channels Gyproframe MF Ceiling Channels Gyproframe Accessories



• for significantly improved strength at the lightest possible weight • build stronger, higher walls with greater speed and ease

Seamless jointing

### Gyproc Jointing Compound

- Ready mixed for convenience.
- Low shrinkage
- Easy to sand



### Gyproc Paper Tape

- Pre-creased with light pin holes to reduced air bubbles.
- Reinforcement of flat joints and internal angles.
- Available in 150m roll.



### Gyproc Fibre Tape

- Self-adhesive, glass reinforced, tear resistant tape.
- Allows movement between joints.
- Reducing cracking.
- Available in gom roll.



Secure fixings

### Gyproc Drywall Screws / Gyproc Jack Point Screws

- Zinc plated and corrosion resistant.
- For fixing Gyproc boards to Gyproframe metal sections.
- Available in 25mm, 35mm 42mm and 55mm.



### Gyproc Wafer Head Screws / Gyproc Jack Point Wafer Head Screws

- Zinc plated and corrosion resistant.
- For fixing Gyproframe components metal-to-metal.
- Available in 13mm.



# Keeping Informed

\* Register at [www.gyproc.ae/register](http://www.gyproc.ae/register) or complete the form below and return to Marketing Department, Saint-Gobain Gyproc Middle East, P.O. Box 261107, Dubai, UAE

Title: \_\_\_\_\_ First Name: \_\_\_\_\_ Surname: \_\_\_\_\_

Job Title: \_\_\_\_\_ Type of Business: \_\_\_\_\_

Company Name: \_\_\_\_\_ PO Box: \_\_\_\_\_

Address: \_\_\_\_\_ Country: \_\_\_\_\_

Email: \_\_\_\_\_ Mobile: \_\_\_\_\_

Telephone: \_\_\_\_\_ Fax: \_\_\_\_\_

**Please register me for information and news from Gyproc**

**Please send me more information on:**

- Gyproc Plasterboard Products
- Gypframe Metal Components
- Gyproc Screws and Fixings
- Gyproc Fibre Tapes and Paper Tapes
- Gyproc Wall and Ceiling Systems

**Please keep me updated on:**

- New Product Launches
- Drylining Systems
- Product & System Training
- Technical Support
- SpecSure System Warranty

\* For further information please visit our website: [www.gyproc.ae](http://www.gyproc.ae)

**Gyproc respecting your privacy:**

We may record the information that you provide to us to learn more about your purchasing preferences and to update and inform you of products, offers and services that we think might be of interest to you. We may also disclose your information to our agents, group companies and other carefully selected third parties who may also wish to contact you for these purposes. By providing your information to us, you confirm that you agree and consent to us contacting you by telephone, post or email. To withdraw your consent please tick this box



**Customer Service Enquiries:**

Tel: 800 Gyproc (497762)  
International: +971 800 497762  
Fax: +971 4 883 7005  
Email: [gyproc-me@saint-gobain.com](mailto:gyproc-me@saint-gobain.com)

**Sales Enquiries:**

Tel: 800 Gyproc (497762)  
International: +971 800 497762  
Fax: +971 4 883 7005  
Email: [gyproc-me@saint-gobain.com](mailto:gyproc-me@saint-gobain.com)

**Technical Enquiries:**

Tel: +971 4 881 3515  
Fax: +971 4 887 3036  
Email: [gyproc-me@saint-gobain.com](mailto:gyproc-me@saint-gobain.com)

[www.gyproc.ae](http://www.gyproc.ae)

Literature Code: 0031 – PB – 01

Saint Gobain Gyproc Middle East  
P.O. Box 261107  
Dubai, UAE

Saint Gobain Gyproc Emirates Industries L.L.C  
P.O. Box 38983  
ICAD 1, Mussafah  
Abu Dhabi, UAE

Gyproc reserves the right to revise product specifications without notice. The information in this document was correct to the best of our knowledge at the time of publication. It is the user's responsibility to ensure that it remains current prior to use. The information in this document is for guidance only and should not be read in isolation. Users should read and familiarize themselves with all the information contained in this document and ensure that they are fully conversant with the products and systems being used, before subsequent specification or installation.

